

---

ENJOY  
RELAX  
FORGET ABOUT TIME



---

# BATHE WITH MOUNTAIN VIEWS

The Mineralbad & Spa Rigi Kaltbad is a firm part of the 600-year-old spa tradition in the local area. It is a haven of rest and relaxation, located in the heart of an enchanting mountain landscape. The spa was designed by world-famous architect Mario Botta.

## COLD BATHING

Rigi Kaltbad has been a place of pilgrimage for 600 years. The first bath chapel was built here in 1545. Back then, however, people bathed in cold water – as the German name 'Kaltbad' (cold bath) suggests. Mario Botta tapped into this tradition with his design and breathed new life into the old spa culture.

## MINERAL BATH

In the main bathing hall, a 30-metre-long granite wall inset with large alcoves leads to the outdoor pool. The glass skylights, which are reminiscent of rock crystals, create a mystical lighting effect inside the spa. The vast glass façade offers unobstructed views of the stunning mountain landscape. In the outdoor pool, you can relax in the open air in warm mineral water from the healing Drei-Schwestern-Brunnen spring.

## SPA

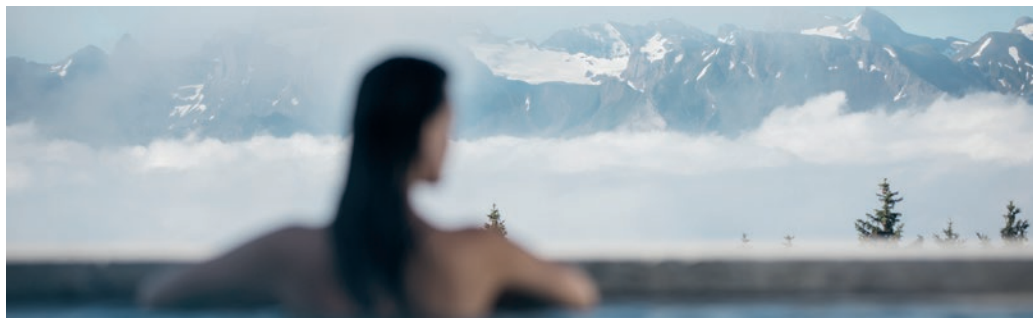
The spa is reserved exclusively for adults aged 16 or over. This is where we perform our massages. One of the highlights here is the crystal spa. Guests can also enjoy an infusion sauna, where a variety of herbal infusions is on offer. The sauna facilities offer plenty of space for you to relax and let your body soak up the heat and herbal aromas.

## DIVE IN AND BOOK YOUR VISIT

You can find more information and our photo gallery on our website [mineralbad-rigikaltbad.ch](http://mineralbad-rigikaltbad.ch)



Or book your moment of indulgence online right now.



# ADMISSION PRICES

## MINERALBAD & SPA

For all day spa packages, treatments, massages and other indulgent spa experiences, we recommend booking in advance on 041 397 04 00 or online.

### MINERAL BATH AND SPA AREA

PRICES DO NOT INCLUDE THE COST OF THE RIGI MOUNTAIN RAILWAY TICKET

Day admission	
incl. mineral bath, steam bath and sauna	CHF 38
Children (7 to 15 years)	CHF 18
Children (4 to 6 years)	CHF 10
Children (1 to 3 years)	FREE
6x day admission (transferable) <sup>1</sup>	CHF 190

Our massage services may only be booked in combination with a day admission ticket.

Children may only use the mineral bath and steam bath when accompanied by an adult.

<sup>1</sup> This offer is valid for two years.

### OPENING TIMES

Daily from 10:00 am to 7:00 pm

Between 8:00 am and 10:00 am each day, the spa is reserved exclusively for guests staying at the Hotel Rigi Kaltbad.

The spa stops running 30 minutes before closing.

### GROUP DISCOUNTS AND ANNUAL PASSES

- Groups of 10 people or more: 20% discount
- Special annual passes for residents of Rigi and the nine lakeside municipalities (Küssnacht/Merlischachen/Immenensee, Greppen, Weggis, Vitznau, Gersau, Ingenbohl/Brunnen, Schwyz/Ibach/Rickenbach/Seewen, Lauerz, Arth/Goldau):  
1 person CHF 550 // 2 people CHF 950.  
Annual passes can be purchased on-site.  
They are personal and non-transferable.

### RIGI MOUNTAIN RAILWAY TICKET

The Rigi mountain railway ticket is not included. You can find all current prices and timetables at: [rigi.ch/en/tickets](http://rigi.ch/en/tickets)

ITEMS FOR HIRE		
Bath towel	CHF 6	(+ CHF 20 deposit)
Sauna towel	CHF 8	(+ CHF 20 deposit)
Swimwear	CHF 8	(+ CHF 20 deposit)
Bathrobe	CHF 10	(+ CHF 40 deposit)
Bathing set (small bath towel and swimwear)	CHF 11	(+ CHF 40 deposit)
Bath towel set (small and large bath towel)	CHF 13	(+ CHF 40 deposit)



# DAY SPA PACKAGES

Day spa – leave the stresses of everyday life behind and treat yourself to a moment of rest and relaxation.

Included in all packages:

- Day admission to the Mineralbad & Spa area
- Tea and spring water
- Price per person

## QUEEN OF THE MOUNTAINS

CHF 148

- Queen of the Mountains massage, including exfoliating facial treatment and face massage (50 minutes)
- Bath towel
- A glass of Prosecco (1 dl)

## PURE GINGER

CHF 193

- Detoxifying ginger-oil massage (50 minutes)
- Home-made drink at reception
- Bathrobe with bath and sauna towel
- Gift bag with flip flops

### BOOKING

For all day spa packages, treatments, massages and other indulgent spa experiences, we recommend **booking in advance on 041 397 04 00** or online.

## QUEEN OF THE MOUNTAINS DELUXE

CHF 203

- Queen of the Mountains massage, including exfoliating facial treatment and face massage (75 minutes)
- Bath towel
- A glass of Prosecco (1 dl)

## 5 SENSES SIGNATURE TREATMENT

CHF 512 FOR 2 PEOPLE

- 5 Senses massage & birch-branch ritual (duration: 90 minutes)
- Bathing bag with bathrobe & bath and sauna towel
- A sweet treat to tickle your taste buds

## SIGNATURE TREATMENT

Our 5 Senses signature treatment is a unique wellness experience that stimulates all five senses in equal measure. Experience the forest with all your senses, watch the interplay of light and shadow, breathe in the scent of the fragrant forest floor, listen to the leaves rustling and the birds chirping. Clear your mind and focus on the here and now and simply feeling the rhythm of nature.



## HOPS & MALT

CHF 148

- Full-body oil massage with hop extracts and hot stones (50 minutes)
- Bath towel
- A cold beer

## HOPS & MALT DELUXE

CHF 203

- Full-body oil massage with hop extracts and hot stones (75 minutes)
- Bath towel
- A cold beer

## A MOMENT OF INDULGENCE ON RIGI

25 MINUTES // CHF 98

50 MINUTES // CHF 148

75 MINUTES // CHF 203

- Full-body oil massage (25/50/75 minutes)
- Bath towel
- A glass of Prosecco (1 dl)



## RISE & SHINE

CHF 90 // CAN BE BOOKED FROM MON-FRI

- Extensive breakfast buffet at Hotel Rigi Kaltbad from 7:15 am to 10:30 am
- Bathing bag with bathrobe, bath towel, salt scrub and surprise gift

## RISE & SHINE WITH MASSAGE

CHF 194 // CAN BE BOOKED FROM MON-FRI

- Extensive breakfast buffet at Hotel Rigi Kaltbad from 7:15 am to 10:30 am
- Massage (50 minutes)
- Bathing bag with bathrobe, bath towel, salt scrub and surprise gift
- A glass of Prosecco (1 dl)





# MASSAGES

## FULL-BODY OIL MASSAGE

Lying first on your front and then on your back, you will receive a head-to-foot massage using warm oil and hot stones. Our masseurs work from your toes through to your legs, torso and back, your arms, hands, shoulders and neck, focusing on each individual area in turn. They work their way into the deep tissue with a combination of smooth strokes, kneading and rubbing motions.

Enjoy the energising blend of jojoba oil with lavender, neroli, bergamot, rose and camomile.

### **The benefits of a full-body oil massage**

Studies have shown that traditional massage can support the immune system, thereby increasing the body's natural self-healing powers. It can help combat stiff muscles, and leaves you feeling lighter and more relaxed. It improves circulation and gives the skin better access to nutrients. It boosts the metabolism, making the body's detoxification processes easier.

This massage treatment leaves you feeling relaxed from head to toe.

## FOOT MASSAGE

A therapeutic massage for heavy legs and tired feet. Regular foot massages improve the circulation in your tendons, ligaments and muscles. This in turn boosts your metabolism and improves mobility in your feet – which is extremely important, given that we rely on our feet to carry us through our whole lives.

## PURE GINGER MASSAGE

A detox massage activates the body's in-built responses by precisely stimulating particular areas of the skin.

Because of the skin's links to other organs in the body, this targets and boosts the performance of the associated organs, thereby supporting the body's detoxification process. This massage technique uses ginger extracts and has a relaxing, stress-reducing and yet revitalising effect.

This powerful detox massage uses deep tissue techniques and an acupuncture massage (APM) pen, which stimulates the bladder and kidney meridians.

## TOO HARD? NOT HARD ENOUGH?

Everyone's pain and pressure tolerance is different, and depends on how you feel on any given day. It's important that you tell us if we are using too much or too little pressure, so that we can adapt to your needs.



# WELLNESS & MORE

## INDULGENCE DREAM FOR TWO

CHF 136 FOR 2 PEOPLE

- Day admission to the Mineralbad & Spa area
- Picnic hamper
- Tea and spring water
- For adults aged 16 or over

Advance booking required on 041 397 04 00.

## FONDUE FOR TWO

CHF 152 FOR 2 PEOPLE

- Day admission to the Mineralbad & Spa area
- Fondue with local mountain cheese in a rustic setting, drinks included
- Tea and spring water
- For adults aged 16 or over

Advance booking required on 041 397 04 00.

## RELAX & DINE

CHF 87 PER PERSON

- Day admission to the Mineralbad & Spa area
- Tea and spring water
- Two-course menu in Restaurant Alpina (excl. drinks)

Hotel Alpina and the Mineralbad & Spa Rigi Kaltbad have joined forces: start by relaxing in the Mineralbad & Spa Rigi Kaltbad, then enjoy the renowned 'Flambi-Spiess' flambé menu at Hotel Alpina.

The two offers may only be redeemed on the same day. Please plan your arrival and departure from Vitznau.

Please book in advance on 041 397 04 00.



---

# ACCOMMODATION PACKAGES

## RIGI WORLD OF WONDER FOR TWO

CHF 470 FOR 2 PEOPLE // AVAILABLE SUN-THURS  
CHF 570 FOR 2 PEOPLE // AVAILABLE FRI AND SAT

- One night at the Hotel Rigi Kaltbad, including breakfast buffet
- Bath towel
- Day admission to the Mineralbad & Spa area
- Full-body oil massage (50 minutes)
- A glass of Prosecco each (1 dl)
- Tea and spring water

## ALPINA GETAWAY FOR TWO

CHF 350 FOR 2 PEOPLE // AVAILABLE SUN-THURS  
CHF 390 FOR 2 PEOPLE // AVAILABLE FRI AND SAT

- One night at the Hotel Alpina, including breakfast buffet
- Bath towel
- Day admission to the Mineralbad & Spa area
- Full-body oil massage (25 minutes)
- A glass of Prosecco each (1 dl)
- Tea and spring water

## RIGI DREAM GETAWAY FOR TWO

CHF 570 FOR 2 PEOPLE // AVAILABLE SUN-THURS  
CHF 670 FOR 2 PEOPLE // AVAILABLE FRI AND SAT

- One night at the Hotel Rigi Kaltbad, including dinner and breakfast buffet
- Bath towel
- Day admission to the Mineralbad & Spa area
- Full-body oil massage (50 minutes)
- A glass of Prosecco each
- Tea and spring water





---

# ACCOMMODATION OPTIONS

## HOTEL ALPINA

[ALPINA-RIGI.CH](http://ALPINA-RIGI.CH)

This small, elegant hotel is located 1,450 m above sea level in Rigi Kaltbad, right in the heart of the stunning Alpine world of the Rigi massif. From the hotel, you can enjoy a breathtaking view of the mountains of Central Switzerland and Lake Lucerne. You can reach the Alpina by cable car from Weggis or by rack railway from Vitznau.

The Alpina team looks forward to welcoming you soon!

## HOTEL RIGI KALTBAD

[HOTELRIGIKALTBAD.CH](http://HOTELRIGIKALTBAD.CH)

Your number-one conference and spa hotel in the mountains of Central Switzerland – discover the Hotel Rigi Kaltbad, a 3-star superior hotel with direct access to the Mineralbad & Spa designed by Mario Botta, as well as hotel rooms with magnificent views.

The car-free mountain village of Rigi Kaltbad is located on one of Switzerland's sunniest and most beautiful natural viewing terraces, offering a captivating panoramic view of Lake Lucerne. Here at 1450 metres above sea level, a 600-year-old spa tradition meets modern architecture.

Experience an inspiring alpine world full of opportunities for exercise, wellness, hiking and adventures out in nature – rest and relaxation guaranteed. Ideal for a conference, wellness weekend, family holiday or just a few relaxing days in the Swiss mountains.

The Rigi Kaltbad team looks forward to your visit.



---

# THE HEALING POWER OF WATER

## HEALING WATER, HEATED SUSTAINABLY

Unlike 600 years ago, you can now bathe in warm water, sustainably heated by wood from Rigi. The water at the Mineralbad & Spa Rigi Kaltbad comes from our own healing spring, supplied by the Drei-Schwestern-Brunnen, just as it was 600 years ago.

This rich mineral water has a positive effect on health and well-being. We burn wooden logs to heat the water to 35 °C – so you don't have to bathe in cold water, as they did 600 years ago. All the wood we use comes from Rigi.

Wood is a carbon-neutral, renewable energy source. This method also saves the forest owners long transport journeys into the valley. Mineralbad & Spa Rigi Kaltbad is a bulk buyer, purchasing 300 steres (roughly 300 m<sup>3</sup>) of timber per year. This benefits our guests, the local economy and the environment.



## MINERALBAD & SPA AREAS

Wellness for every need: from the spa facilities to saunas, spa lounges, massages and the crystal spa.

### The main bathing hall

Here in the main bathing hall, you can relax in warm 35 °C water. Roomy alcoves in the stone wall provide perfect spots to relax and while away the time. You will also find a whirlpool, massage jets, shallow water zones, bubble loungers and a relaxation and lounge area. The vast glass façade offers spectacular panoramic views.

### The outdoor pool

Out here, the mountains feel close enough to touch: the outdoor pool, with its heated mineral water, is ideal for open-air bathing all year round. In summer, you can relax on the sun deck.

### The herbal steam bath

The herbal steam bath is a long space that leads to the relaxation room. The steam bath cleanses, purifies and detoxes the skin.

### The spa area

In the spa area, which is reserved for adults aged 16 and over, you'll find the crystal spa – a highlight of your visit. It's home to the Finnish herbal sauna, with special infusions for rest and relaxation, and the warm waters of the crystal spa itself. There is also a relaxation and lounge area for you to enjoy. Rigi spring water and tea are available in the lounge.

### Botta lounge

Bathing certainly works up an appetite: you can pick up some drinks, a little snack or a sandwich in our bistro.

# JOURNEY TO MT. RIGI

## Arial cable car Weggis – Rigi Kaltbad

The arrival with the cable car from Weggis to Rigi Kaltbad is fast and practical. The entrance to the Mineralbad & Spa is located in the same building as the top station of the cable car.

## Cogwheel railway from Vitznau

In 20 minutes, you can travel comfortably by cogwheel railway from Vitznau to Rigi Kaltbad. The Mineralbad & Spa is only a few metres from the station. Vitznau can be reached, among other things, by a trip across Lake Lucerne from Lucerne. The Lake Lucerne Navigation Company sells combined tickets for the boat trip, mountain railway and mineral bath admission.

## Cogwheel railway from Goldau

Arth-Goldau is a central public transport hub and can be reached very quickly, especially from Zurich. The journey to the mineral bath takes a little longer from there, but offers interesting combination options. The ride on the cogwheel railway from Goldau to Rigi Wölfertschen – First can be combined with a short hike (40 minutes) to the mineral bath on Rigi Kaltbad. If you want to combine the journey with a view of 13 lakes and 24 Swiss cantons, take the cogwheel railway to Rigi Kulm. From there, scenic hiking and walking trails lead to Rigi Kaltbad in one hour. Of course, Rigi Kaltbad can also be reached by cogwheel railway from the interchange stations at Rigi Staffel or Rigi Kulm.



## Hike and relax combo

All in one with the Rigi 'Kombi-Ticket': Round up your Rigi excursion with relaxing hours in the Mineralbad & Spa Rigi Kaltbad and let yourself be enchanted by the fantastic view. This ticket includes a day pass for the Rigi Railways and admission to the Mineralbad & Spa Rigi Kaltbad. The combined ticket can be purchased online without waiting times or, if required, at the ticket office in Goldau, Vitznau and Weggis.

## 365-Day pass

With the 365-day Rigi Railways season ticket you can enjoy unlimited hiking, rail and winter fun on the Rigi. You also benefit from 20% off admission to the Mineralbad & Spa Rigi Kaltbad. More information at [rigi.ch/abo](http://rigi.ch/abo)

[rigi.ch/en/experience/rigi-mountain-railways](http://rigi.ch/en/experience/rigi-mountain-railways)



OUR SPAS PROVIDE SMOOTHLY FLOWING HAVENS  
OF REST AND RELAXATION FOR YOU TO EXPERIENCE.  
WE HAVE SPAS IN SIX REGIONS OF SWITZERLAND.

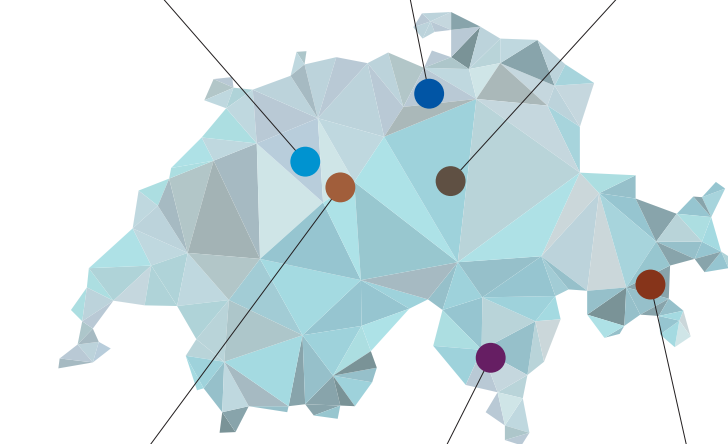
Solbad & Spa  
**SCHÖNBÜHL**



Hürlimannbad & Spa  
**ZÜRICH**



Mineralbad & Spa  
**RIGI KALTBAD**



Hamмам & Spa  
**OKTOGON BERN**



Termali Salini & Spa  
**LOCARNO**



Mineralbad & Spa  
**SAMEDAN**



ENJOY – RELAX – FORGET ABOUT TIME IN ONE OF AQUA-SPA-RESORTS' SPA WORLDS  
Bern | Schönbühl | Samedan | Zürich | Rigi Kaltbad | Locarno

AQUA-SPA-RESORTS AG, Mineralbad & Spa Rigi Kaltbad, Zentrum 1, 6356 Rigi Kaltbad  
041 397 04 00, [info@mineralbad-rigikaltbad.ch](mailto:info@mineralbad-rigikaltbad.ch), [mineralbad-rigikaltbad.ch](http://mineralbad-rigikaltbad.ch)